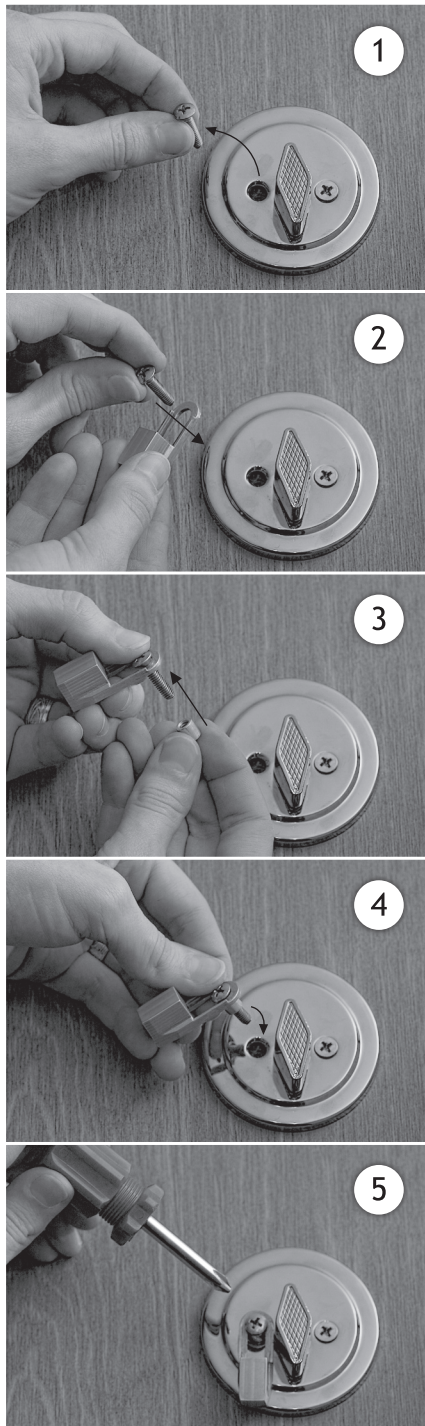


INSTALLATION



REQUIREMENTS TO INSTALL A SIMLOCK

A properly installed deadbolt. SIMLock cannot guarantee the product will work if your current deadbolt locking system is not correctly installed. The two mounting screws of your current lock must be in a horizontal position.

1. Remove screw furthest away from the doorframe. The old screw is not required.
2. Thread the supplied screw through the SIMLock.
3. Thread the provided spacer onto the screw.
4. Insert screw with SIMLock and spacer into the vacant screw hole on the existing lock.
5. Tighten screw until secure. Be careful not to over-tighten, which can interfere with the movement and function of the SIMLock.

TO LOCK



1. Secure deadbolt in a vertical "lock" position.
2. Spin the SIMLock clockwise until it rests against the deadbolt. Then Slide the SIMLock down into a locking position over the screw.